

PK46 Kiosk Touch Panel



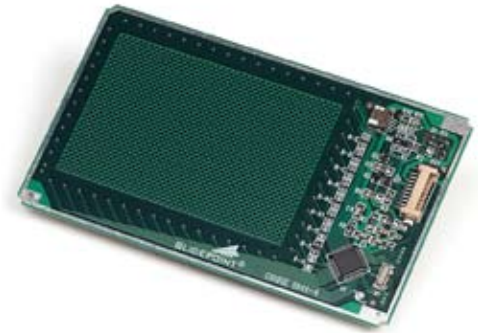
The PK46 is the largest non-custom touchpad surface we offer and is ideal for OEM integration into a wide variety of products requiring a high-performance input device. The overlay can be embossed with one or three user-friendly hotlink buttons, which eliminate the need for potentially unreliable mechanical switches. The programmable hotlinks independently execute programs/commands, open files, control browser functions, assign (toggle) mouse actions and control cursor modes (i.e. horizontal snap-to-grid). We also offer custom overlays to match your design requirements.

applications

- Kiosk
- Industrial controls
- Medical devices
- Instrumentation
- Web terminals

features

- Large sensing area: 77 x 54 mm
- Both PS/2 & USB compatibility
- Low power consumption
- Easy product integration due to thin, lightweight design
- No maintenance required – Sealable design is immune to moisture, dust and abuse
- One or three virtual hot buttons for improved reliability
- Superior navigation and high responsiveness
- Windows® compatible embedded features mean no additional drivers needed

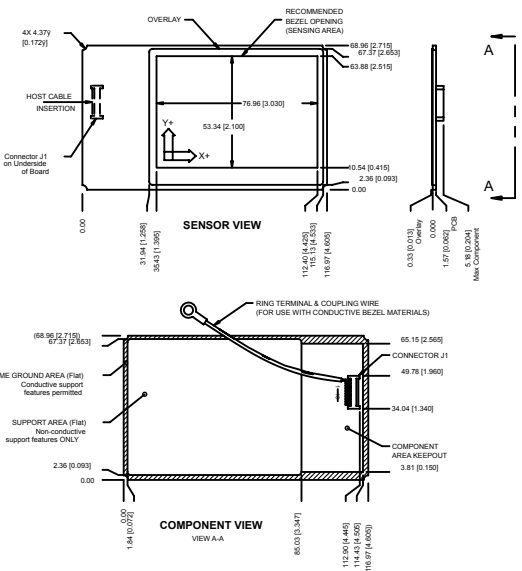


Using our patented GlidePoint® technology, the PK46 is immune to moisture, allowing it to function properly even with water droplets present on the touchpad's sensing surface. Power efficiency of any application is improved with an "idle mode," where the touchpad's current draw is reduced when a finger is not touching its surface.

The PK46 is fully compatible with standard Windows mouse drivers. A software driver is included for enabling the advanced features illustrated on its respective overlay surfaces. Hardware-configurable options on the module allow for taps (function as left-button clicks), corner-taps (function as right-button clicks), vertical scroll (functions as mouse scroll wheel) and more, depending on the specific application. However, for applications requiring greater flexibility, we offer a Windows driver, which allows users to enable and disable advanced features, personalize settings and reprogram buttons.

For custom functionality at the product design stage, we offer software that allows OEMs to enable, disable or personalize advanced settings and/or reprogram the touch sensitive area.

Interface	PS/2 (with 10-pin FCC connector) & USB (with 10-pin cable connector)
Operating Systems	Windows 95, 98, 2000, NT, XP
Button Support	One (1) or three (3) virtual hot buttons
Sensor Overlay	Kiosk design with embossed hot buttons Standard - part no. 50-36-00
Physical Parameters	
Length	116.00 mm (4.600 inches)
Width	68.80 mm (2.710 inches)
Thickness	5.50 mm (0.217 inches) with all components
Weight	< 32 g (< 1.13 ounces)
Maximum Bezel Opening	77.20 mm x 54.00 mm (3.040 x 2.125 inches)
Voltage	5v +/- 10%
Current	6.6 mA (active) 2.6 mA (idle)
Operating Temperature	0 to 60° Celsius
Operating Humidity	5% to 100% relative humidity (condensing)
Storage Temperature	-40 to 65° Celsius
ESD	15kV when properly mounted in bezel
Environmental	EMI tolerant and manufactured RoHS compliant
Available Accessories	PS/2 cable: 183 cm (6 feet) - part no. 52-21-02 USB cable: 183 cm (6 feet) - part no. 52-21-00 Mounting Bracket - part no. PK46-M



Our knowledgeable and helpful sales team is ready to answer all of your questions. Please call toll-free 1-800-GLIDE-75 or www.cirque.com.